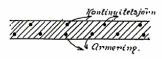


1818  
1913

Hydrograd. d. Tomten. 7 & 9 No. Struktören.  
Konstruktionsritning.  
Bjälklag. öfver. Hallaren.

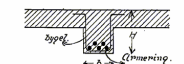
3756



Plattan.

Nr	Armering.
1	8 1/2 10 1/2 x 8 cm. 0.012
2	10 1/2 10 1/2 x 10 1/2

System af 10% af bäljor  
d. 20 cm. af stål.

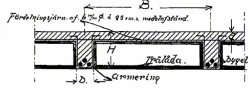


Balken.

Nr	Armering.	Grundning.
1	20 20 5 8 8 5	1/2 1/2 1/2 1/2
2	20 20 5 8 8 5	1/2 1/2 1/2 1/2
3	20 20 5 8 8 5	1/2 1/2 1/2 1/2
4	20 20 5 8 8 5	1/2 1/2 1/2 1/2
5	20 20 5 8 8 5	1/2 1/2 1/2 1/2
6	20 20 5 8 8 5	1/2 1/2 1/2 1/2
7	20 20 5 8 8 5	1/2 1/2 1/2 1/2
8	20 20 5 8 8 5	1/2 1/2 1/2 1/2
9	20 20 5 8 8 5	1/2 1/2 1/2 1/2
10	20 20 5 8 8 5	1/2 1/2 1/2 1/2
11	20 20 5 8 8 5	1/2 1/2 1/2 1/2
12	20 20 5 8 8 5	1/2 1/2 1/2 1/2
13	20 20 5 8 8 5	1/2 1/2 1/2 1/2
14	20 20 5 8 8 5	1/2 1/2 1/2 1/2
15	20 20 5 8 8 5	1/2 1/2 1/2 1/2

System af 7% af bäljor. d. 25 cm.  
med afstånd. frän. utslagen.

X Enkeltlinje för anslutning

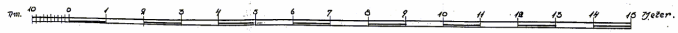
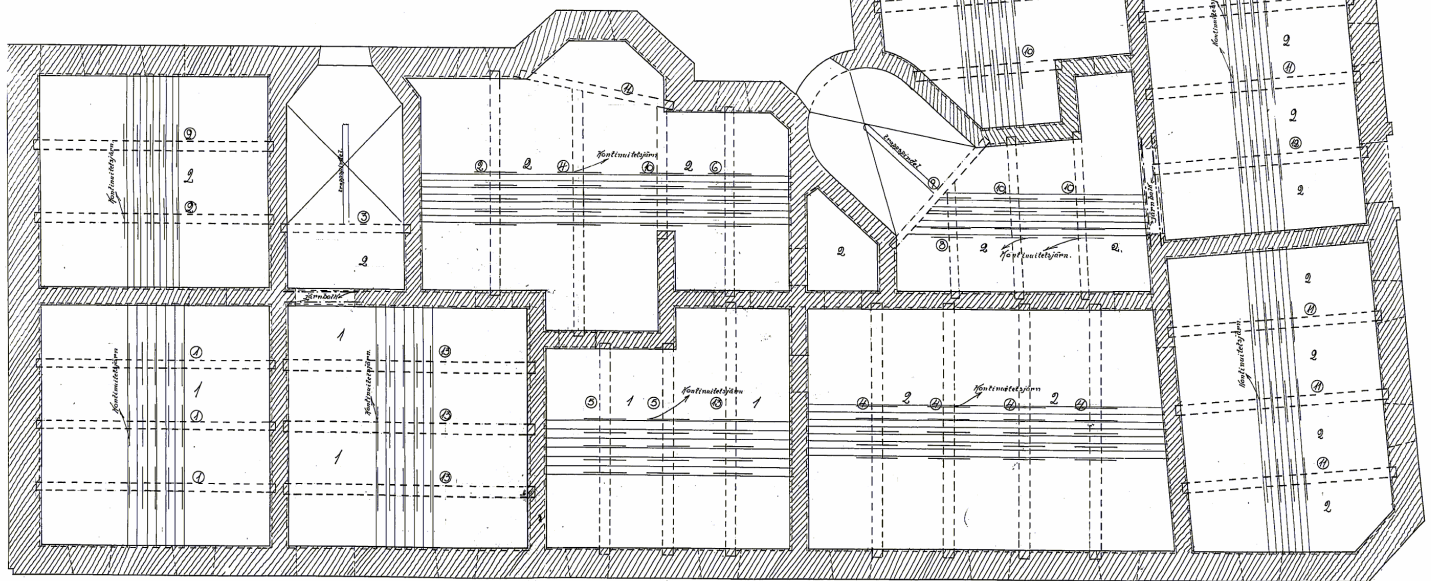
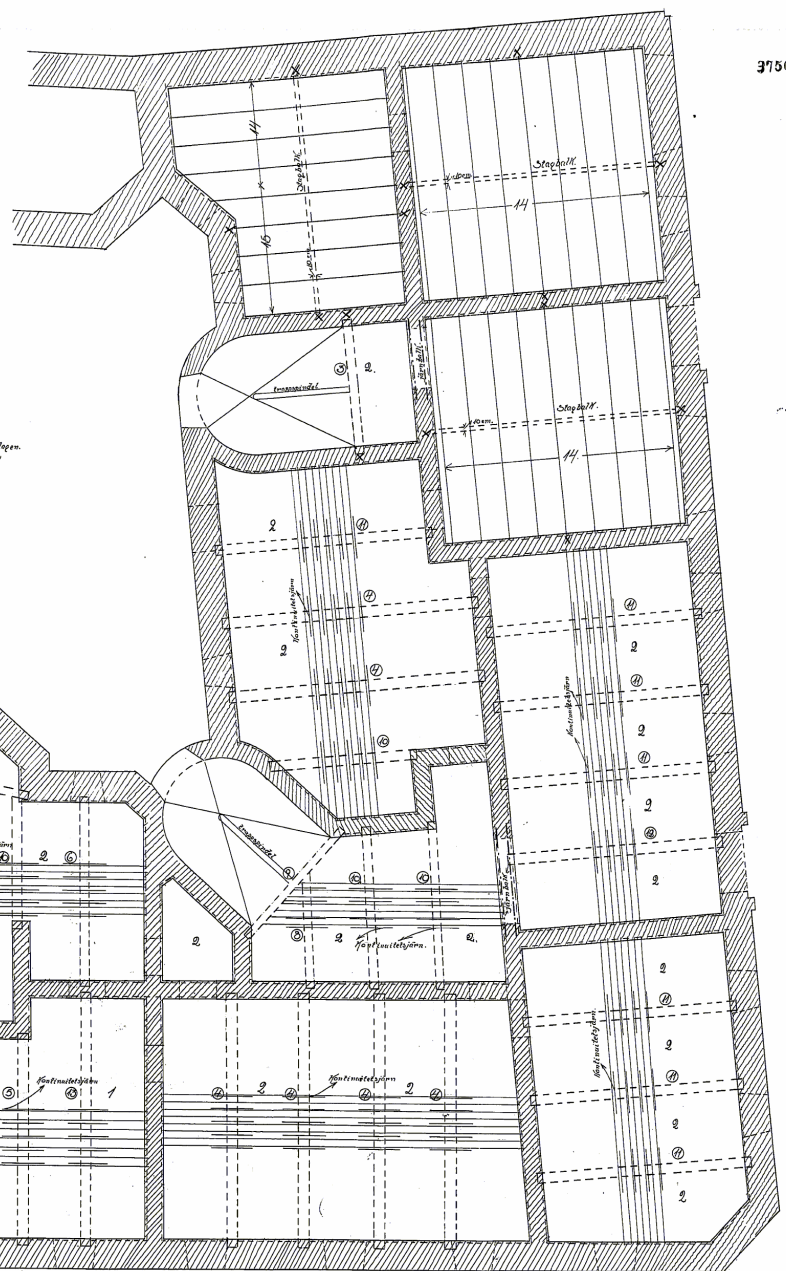


Platta.

Nr	Armering.	Grundning.
1	10 1/2 10 1/2 x 8 cm. 0.012	1/2 1/2 1/2 1/2
2	10 1/2 10 1/2 x 10 1/2	1/2 1/2 1/2 1/2

System af 6% af bäljor. d. 20 cm.  
med afstånd. frän. utslagen.

Beton i blandning. 1:3:3.



Arkiv. Sen 7-5-13  
Nya Anstalt Aktiefelaget  
Oscar Kihlström